

Fulflo® SF Filter Vessels

- Carbon Steel
- 304 and 316 Stainless Steel

Multi-Cartridge Filter Vessel Series

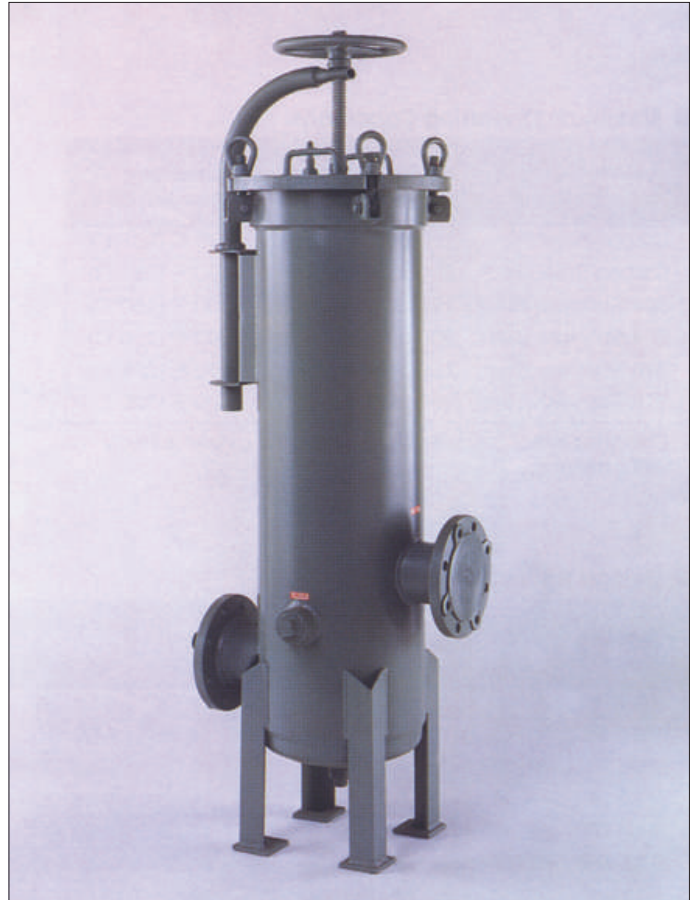
High Flow Rates With Fulflo® SF Series Coded Vessels

Fulflo® SF Multi-Cartridge Filter Vessels meet a broad range of liquid and gas applications. PED compliance consult Parker.

The SF Housing Series accommodates double-open-ended (DOE) and single-open-ended (SOE) cartridges in 254mm (10"), 508mm (20"), 762mm (30") and 1016mm (40") equivalents.

Applications

- Animal Oils
- Concentrated Alkalies
- Dilute Acids & Alkalies
- Mineral Acids
- Organic Acids
- Solvents
- Oxidizing Agents
- Petroleum Oils
- Photo Solutions
- Potable Liquids
- Vegetable Oils
- Water



Design Features

- Designed and fabricated in accordance with the Pressure Vessel Code.
- Mechanical coverlifts of carbon steel construction standard on models SF12 and SF19.
- Designed for minimum pressure drop.
- External welded attachments on stainless steel models are also stainless steel.
- All SF models feature swing bolts with eyenuts for easier cleaning and servicing.
- O-ring seals provide positive closure.
- Standard Buna-N O-rings with optional Viton* elastomer, neoprene, ethylene propylene rubber and Teflon* elastomer O-rings are also available for temperatures up to 500°F (261°C).
- Hydraulic coverlifts optional on SF12 and SF19 models.

Process Filtration Division

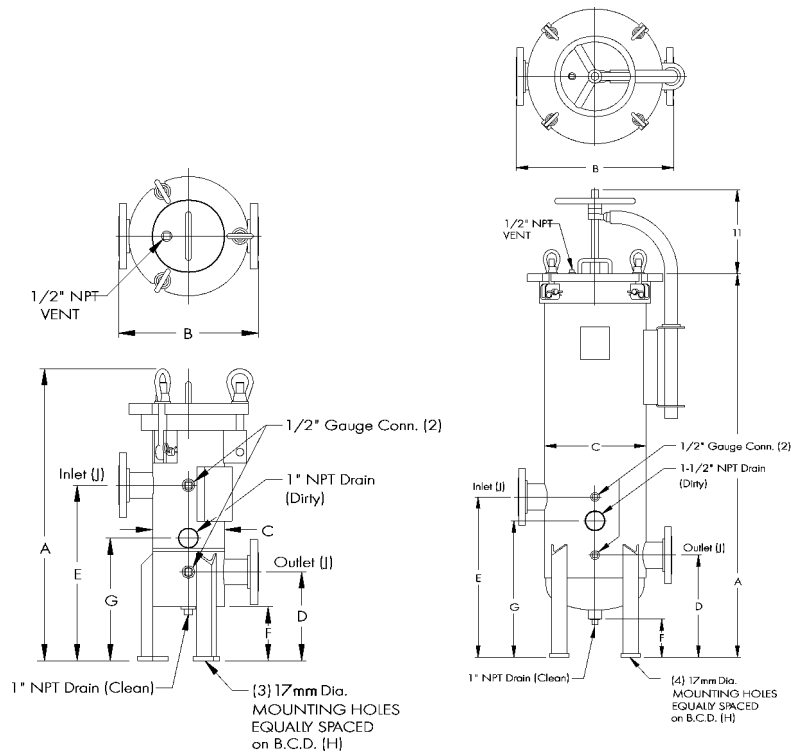
WARNING! FAILURE OR IMPROPER SELECTION OR IMPROPER USE OF THE PRODUCTS AND/OR SYSTEMS DESCRIBED HEREIN OR RELATED ITEMS CAN CAUSE DEATH, PERSONAL INJURY AND PROPERTY DAMAGE. This document and other information from Parker Hannifin Corporation, its subsidiaries and authorised distributors provide product and/or system options for further investigation by users having technical expertise. It is important that you analyse all aspects of your application and review the information concerning the product or system in the current product catalogue. Due to the variety of operating conditions and applications for these products or systems, the user, through its own analysis and testing, is solely responsible for making the final selection for the products and systems and assuring that all performance, safety and warning requirements of the application are met. The products described herein, including without limitation, product features, specifications, designs, availability and pricing, are subject to change by Parker Hannifin Corporation and its subsidiaries at any time without notice.

Multi-Cartridge Filter Vessel Series

Maximum Operating Conditions

Material of Construction	Maximum Operating Pressure (bar @ 12fC) [†]	Maximum Design Temperature
Carbon Steel	150 psi (10.3 bar)	500°F (261°C)
Carbon Steel	300 psi (20.7 bar)	500°F (261°C)
304 Stainless Steel	150 psi (10.3 bar)	300°F (150°C)
304 Stainless Steel	300 psi (20.7 bar)	300°F (150°C)
316 Stainless Steel	150 psi (10.3 bar)	400°F (206°C)
316 Stainless Steel	300 psi (20.7 bar)	400°F (206°C)

[†] Operating temperature limited by standard gasket material and exterior paint.



Design Specifications

Model	No. & Length of Cart. (mm)	Max. Flow (l/min)	Dimensions			D mm	E mm	F mm	G mm	H mm	J ^{††}	Shipping Weight (Kg)
			A [†] mm	B mm	C mm							
SF3-1-2F	(3) 254	57	678	327	170	208	410	127	290	148	2	57
SF6-1-2F	(6) 254	114	684	377	220	208	410	130	290	200	2	82
SF6-2-2F	(6) 508	228	940	377	220	208	410	130	290	200	2	84
SF6-3-2F	(6) 762	341	1195	377	220	208	410	130	290	200	2	91
SF6-4-3F	(6) 1016	454	1486	377	220	208	410	130	305	200	3	100
SF12-3-3F	(12) 762	681	1274	520	306	340	530	127	455	308	3	141
SF12-3-4F	(12) 762	681	1274	520	306	340	530	127	455	308	4	143
SF12-4-4F	(12) 1016	908	1532	520	306	340	530	127	455	308	4	150
SF19-3-4F	(19) 762	1079	1274	597	383	340	530	127	455	388	4	191
SF19-4-4F	(19) 1016	1438	1532	597	383	340	530	127	455	388	4	200

[†] Add 5 in to this dimension for hydraulic coverlift.

^{††} Inlet and outlet size standard ASA flanges.

Ordering Information

4	SF	12	—	2	—	3F	K1
Material	Design Series	Number of Columns	Cartridge Length (mm)	Inlet/Outlet Flange Size	Coverlift Option		
No Symbol = Carbon Steel	4SF = 304 Stainless Steel	3	1 = 254	2	K1 = Mechanical		
4 = 304 Stainless Steel	6SF = 316 Stainless Steel	6	2 = 508	3	K2 = Hydraulic		
6 = 316 Stainless Steel	HSF = 300 PSI Design	12	3 = 762	4			
	CSF = Non-Code Design	19	4 = 1016				

Process Filtration Division

* A trademark of E. I. du Pont de Nemours & Co.

Parker Filtration
Filter Division Europe
Shaw Cross Business Park
Dewsbury, West Yorkshire
WF12 7RD, England
Phone: +44 (0) 1924 487000
Fax: +44 (0) 1924 487001
Website: www.parker.com

